



PRODUCT TYPE SPMH & SPHH

Metallic Dome Head & Hex Head Stopping Plugs

Ex db : Ex eb : Ex nR : Ex ta : IP66 : IP68 : Class I Div 1 : AEx db : AEx eb : AEx ta



PRODUCT DESCRIPTION

"SPMH & SPHH" Series Certified Metallic Stopping (Blanking) Plugs provide a method of sealing unused entries in Ex equipment. They maintain Ex db, Ex eb, Ex ta and Ex nR methods of protection and IP66, IP68 for IEC type applications. They are Class I Division 1, Class II Division 1, Class II and Class I Zone 1 approved for NEC and CEC type applications whilst also maintain Type 4X/6P rating.

COMPLIANCE STANDARDS:

EN 60079-0, EN 60079-1, EN 60079-7, EN 60079-15, EN 60079-31
IEC 60079-0, IEC 60079-1, IEC 60079-7, IEC 60079-15, IEC 60079-31 & IEC 60529
C22.2 (see certificate), UL514B, UL1203, ANSI/UL 60079-0/1/7, ISA 60079-31, UL 50E

EXAMPLE PART NUMBERING:
SPMH/BF/NP/M20

SP	Stopping (Blanking) Plug
MH	Dome (Mushroom) Head (MH) / Hex Head (HH)
1	No IP O-ring (O) - Nitrile (T) - Silicone (3)
B	Brass (B) - Stainless Steel (S) - Aluminium (A)
F	Multiple Certification
K-V-H	Locknut & Nylon (K), Fibre (V) or PTFE (H) IP Washer
T	Including Earth Tag
S	Including Serrated Washer
1	Quantity per kit
NP	Nickel Plated
M20	Male Thread

OPTIONAL ACCESSORIES:

IP Washers	(N) Nylon (ACNSW) / (V) Fibre (ACFSW) / (H) PTFE (ACPSW)
Earth Tag	(T) Brass (ACBET) / St-Steel (ACSET) / Aluminium (ACAET)
Locknut	(L) Brass (ACBLN) / St-Steel (ACSLN) / Aluminium (ACALN)
Serrated Washer	(S) Stainless Steel (ACSSW)

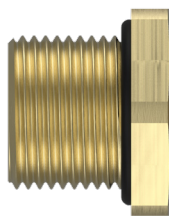
IP RATING:	IP66, IP68 (100m for 7 days) & Type 4X/6P
OPERATING TEMPERATURE:	O-ring - None -100°C to +400°C O-ring - Nitrile -30°C to +100°C O-ring - Silicone -60°C to +200°C
MATERIALS:	Brass, Stainless Steel or Aluminium
PLATING:	Electroless Nickel

Male threads are manufactured in accordance with:-

- ISO Metric threads to ISO 965-1, ISO 965-3, BS3643 and IEC 60423
- PG threads to DIN40430
- ET threads to Imperial Conduit BS31
- ISO Pipe Parallel to ISO 228 and BS2779 (BSPP, G, R, PF & Tpy 6)

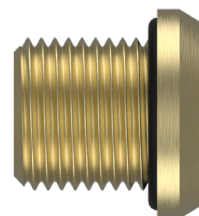
SPMH INFORMATION TABLE
(ALL DIMENSIONS IN mm)

ISO Metric Thread	A/F	Overall Length	Weight (Kgs)
M12	19.0	20.5	0.024
M16	23.4	20.5	0.032
M20	27.0	21.0	0.049
M25	31.8	21.0	0.078
M32	37.6	21.0	0.134
M40	47.2	21.5	0.218
M50	57.2	21.5	0.333
M63	69.9	22.0	0.544
M75	90.0	22.0	0.777
M80	90.0	28.0	1.050
M85	106.4	28.0	1.225
M90	106.4	28.0	1.326
M100	114.3	28.0	1.680



SPHH INFORMATION TABLE
(ALL DIMENSIONS IN mm)

ISO Metric Thread	Hex Socket A/F	Overall Length	Weight (Kgs)
M12	6.0	21.5	0.020
M16	8.0	21.5	0.032
M20	10.0	21.5	0.049
M25	12.0	21.5	0.078
M32	12.0	21.5	0.134
M40	14.0	21.5	0.218
M50	17.0	21.5	0.333
M63	17.0	21.5	0.544
M75	19.0	21.5	0.777
M80	22.0	25.5	1.050
M85	22.0	25.5	1.255
M90	22.0	25.5	1.326
M100	22.0	25.5	1.680



Head Diameter = Minimum 5.5mm larger than the major thread diameter.

NOTES

- Assembly instructions must be read prior to installation and adhered to in full.
- For Ex db applications female threads must comply with clause 5.3 of IEC 60079-1.
- For Ex nR applications parallel entry threads must be installed with a suitable entry thread seal.
- Where applicable, the standard O-ring material is nitrile. Other options are available upon request.
- Aluminium versions are not suitable for Group I Mining applications.
- Only products with Metric and NPT threads are marked with CSA approval.
- Brass product is not marked or intended to be used in Class I Division 1 installations.
- Peppers supply products with parallel entry threads that conform to the flameproof threaded joint requirements of IEC/EN 60079-1 and other equivalent standards. We usually incorporate a thread run out according to the general machining techniques and will not have a full form thread for the entire length. Peppers Cable Glands Limited will not be held responsible for clients' installations where this has not been taken into account.
- Where approval in addition to UKEX, ATEX, IECEx and CSA is required, this must be clearly requested at time of enquiry / order.